



## Lower Cape Fear Water and Sewer Authority

### Bladen Bluffs Regional Surface Water System

Presentation to:

Cumberland County Board of Commissioners

April 6, 2010

## Presenters

- Don Betz – Executive Director, Lower Cape Fear WASA
- Brenan Buckley, P.E., CDM
- A.P. Carlton, Esq. - Allen and Pinnix
- William Kopp, Treasurer, Lower Cape Fear WASA

## Presentation Outline




- Introduction to the Lower Cape Fear Water and Sewer Authority (LCFWASA)
- Key Timeline and Features of the Bladen Bluffs Regional Surface Water System
- Steps to Secure Treated Water Capacity from LCFWASA

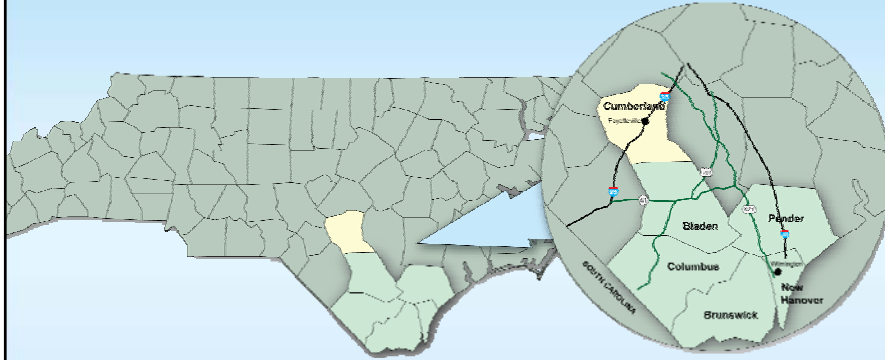
## Introduction to the Lower Cape Fear Water and Sewer Authority (LCFWASA)

### LCFWASA Mission Statement:

*"To provide and assist in providing water, sewer, and related services that enhance quality of life in the region."*

- Created in 1970 to plan, develop a dependable surface water supply for Wilmington, New Hanover County
  - Authorized to construct and operate water and sewer systems in service area
- 

## LCFWASA – Current Membership



- Governed by a 14-person Board of Directors representing 6 entities
- Each board member appointed to 3-year term by governing bodies of each entity

## Bladen Bluffs Regional SWS Stemmed from Environmental Management Commission Action to Address Declining Groundwater Aquifers

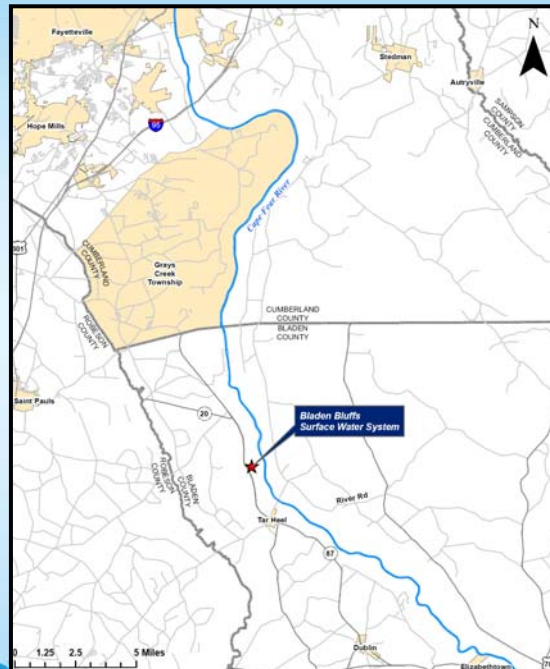
- 2004 – Cooperative Agreement between EMC, Division of Water Resources, and Lumber River COG requires development of plans:
  - For sustainable water sources by Smithfield Packing Company acting alone or in partnership;
  - For alternative water sources by LRCOG, including surface sources; and
  - For regional water supply and water resource management by 2030

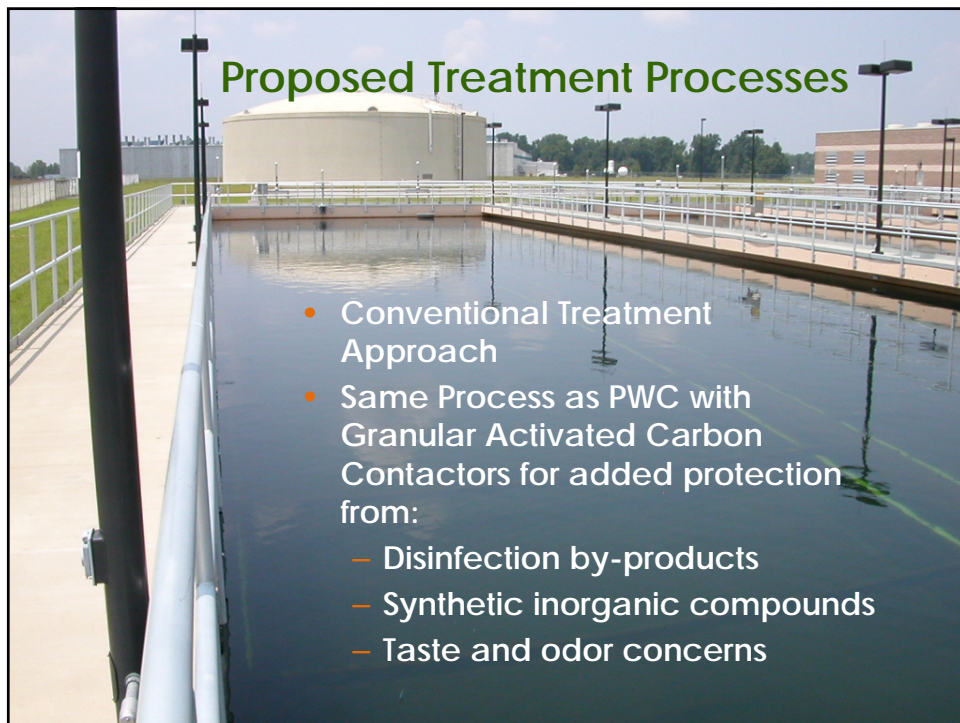
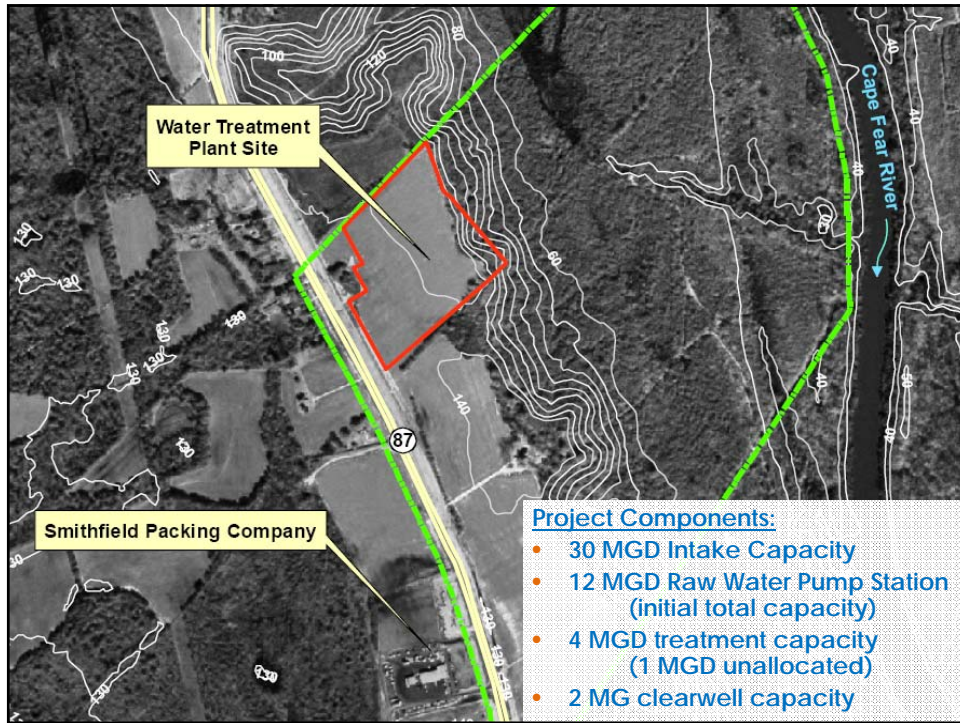
## Bladen Bluffs Regional Surface Water System – Project Timeline

Date	Key Milestone
2004	EMC MOU Executed with Smithfield Packing Company, Lumber River COG
2006	LCFWASA Executes MOU with Smithfield Packing Company
2007	LCFWASA Executes Treated Water Agreement with Smithfield Packing Company
2008	FONSI Issued for 30 MGD Intake, 6 MGD Water Treatment Plant
2009	Cape Fear River Reclassified as Water Supply Waters at Intake
2009	Design, Permitting, and Project Bidding Completed
January 2010	Construction Notice to Proceed
January 2012	Anticipated Availability of Treated Water

## Bladen Bluffs Regional Surface Water System

- Located on NC-87 in Bladen County
- 6.5 miles south of Cumberland County
- Cape Fear River is Surface Water Source



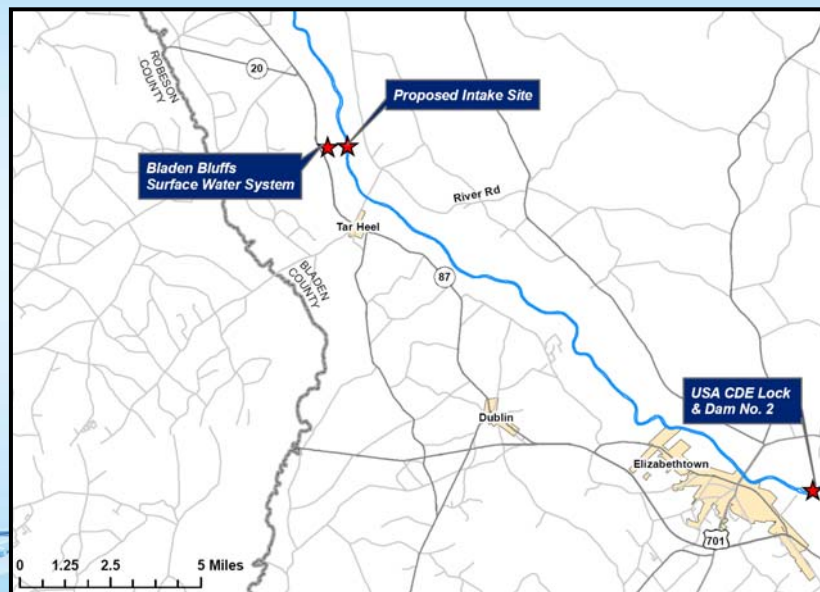


## Benefits of Bladen Bluffs Regional SWS

- Surface water source reduces demand on aquifer and can recover more quickly in drought
  - Significant storage behind Lock and Dam 2
  - Intake location and depth are drought-resistant
- Capable of producing reliable water quality for customers
- Economies of scale provided by regional approach
  - Available unallocated capacity of 1 MGD
  - WTP is readily expandable up to 6 MGD



## Raw Water Intake Location Behind USACOE Lock and Dam Number 2



## Steps to Securing Treated Water Capacity from LCFWASA

- Consider Membership Status with LCFWSA
- Consider Purchase Approach
  - bulk water purchase at point of sale
  - other approaches

## Steps to Securing Treated Water Capacity from LCFWASA

- Develop and Agree Upon Memorandum of Understanding (MOU)
  - Determine Participation Approach
  - Define Project Needs
    - required capacity
    - timeframe
  - Define Project Elements
    - point of sale
    - responsibility for implementation of conveyance system
  - Develop financial package
    - prorated system development charge
    - prorated operating and capacity charges

## Steps to Securing Treated Water Capacity from LCFWASA

- Develop Treated Water Supply Agreement (TWSA) using MOU as guideline
  - Requirements contract for supplying water
  - Operations agreement for day-to-day management of the system

