

Lower Cape Fear Water & Sewer Authority  
Regular Board Meeting Minutes  
March 11, 2024

---

Chairman Knight called to order the Authority meeting scheduled on March 11<sup>th</sup>, 2024, at 9:00 a.m. and welcomed everyone present. The meeting was held at the Authority's office located at 1107 New Pointe Boulevard, Suite 17, Leland, North Carolina. Director DeVane gave the invocation.

**Roll Call by Chairman Knight:**

**Present:** Norwood Blanchard, Patrick DeVane, Wayne Edge, Harry Knight, Al Leonard, Scott Phillips, Charlie Rivenbark, Chris Smith, Phil Tripp, Frank Williams, and Rob Zapple

**Present by Virtual Attendance:** Jackie Newton

**Absent:** Bill Saffo and Bill Sue

**Staff:** Tim H. Holloman, Executive Director; Matthew Nichols, General Counsel; Sam Boswell, COG; Jess Powell P.E., McKim & Creed; and Danielle Hertzog, Financial Administration Assistant

**Guests Present:** Glenn Walker, Brunswick County Water Resources Manager; Jorgen Holmberg, Computer Warriors; Anthony Colon, Pender County Utilities Director of Utilities; James Proctor, Pender County Utilities Deputy Director of Utilities; and Krysden Burden, Brunswick County Public Utilities

**Guests Virtual Attendance:** Tom Hendrick, Pender County Utilities Water Treatment Plant Superintendent; Benjamin Kearns, Cape Fear Public Utility Authority Water Resources Manager Water Treatment; Craig Wilson, Cape Fear Public Utility Authority Engineering Manager; and Ken Waldroup, Cape Fear Public Utility Authority Executive Director

**PLEDGE OF ALLEGIANCE:** Chairman Knight led the Pledge of Allegiance.

**APPROVAL OF CONSENT AGENDA**

**C1 – Minutes of February 12, 2024, Regular Board Meeting**

**C2 – Minutes of February 12, 2024, Finance Committee Meeting**

**C3 – Minutes of February 12, 2024, Personnel Committee Meeting**

**C4 – Kings Bluff Monthly Operations and Maintenance Report**

**C5 – Bladen Bluffs Monthly Operations and Maintenance Reports**

**Motion:** Director Rivenbark **MOVED**; seconded by Director Zapple, approval of the Consent Agenda Items C1-C5. Upon voting, the **MOTION CARRIED UNANIMOUSLY**.

**OLD BUSINESS**

**OB1- Resolution of Lower Cape Fear Water and Sewer Authority Board of Directors Rejecting Sole Bid Submitted for Partial Replacement of Existing Roof at the Kings Bluff Pump Station**

Executive Director Holloman advised the bid came in higher than anticipated. Mr. Holloman recommended rejecting the bid and authorizing LCFWASA and McKim & Creed to solicit informal bids from vendors.

**Motion:** Director Williams **MOVED**; seconded by Director Rivenbark, approval of the Resolution of Lower Cape Fear Water and Sewer Authority Board of Directors Rejecting Sole Bid Submitted for Partial Replacement of Existing Roof at the Kings Bluff Pump Station. Upon voting, the **MOTION CARRIED UNANIMOUSLY**.

**NEW BUSINESS**

**NB1- Budget Amendment #2**

Executive Director Holloman stated that this is to move funds from Operating Checking to R&R to help us reach our goal of 5 million.

**Motion:** Director Edge **MOVED**; seconded by Director Rivenbark, to approve Budget Amendment #2. Upon voting, the **MOTION CARRIED UNANIMOUSLY**.

---

**NB2- Resolution Awarding Contract for Financial Advisory Services for the Lower Cape Fear Water and Sewer Authority**

Executive Director Holloman advised the Finance Committee reviewed and interviewed the submissions from the RFQ for the Financial Advisor. The Finance Committee voted to bring the Resolution Awarding Contract for Financial Advisory Services for the Lower Cape Fear Water and Sewer Authority.

**Motion:** Director Blanchard **MOVED**; seconded by Director Williams, to approve Resolution Awarding Contract for Financial Advisory Services for the Lower Cape Fear Water and Sewer Authority. Upon voting, the **MOTION CARRIED UNANIMOUSLY**.

**PRESENTATION: Source Water Protection Regional Plan by Krysden Burden with Brunswick County Public Utilities**

The presentation will be attached to the minutes.

**ENGINEER'S COMMENTS**

Jess Powell wanted to update the board on the Kings Bluff Phase 2 pipeline. Mr. Powell advised that the project was on schedule and would meet all deadlines.

**ATTORNEY COMMENTS**

No comments

**EXECUTIVE DIRECTOR REPORT**

**EDR1 – Comments on Customers' Water Usage and Raw Water Revenue for Fiscal Year to Date Ending February 29, 2024**

Executive Director Holloman reported that during February 2024, Brunswick County and Cape Fear Public Utilities Authority were above projections.

**DIRECTOR'S COMMENTS AND/OR FUTURE AGENDA ITEMS**

No comments

**PUBLIC COMMENT**

No comments

**CLOSED SESSION**

Chairman Knight requested a motion to go into a closed session in accordance with NCGS §143-318.11(a)(3) to consult with attorney to preserve the attorney-client privilege:

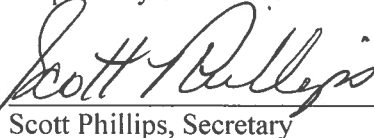
**Motion:** Director Leonard **MOVED**; seconded by Director Williams, to go into closed session in accordance with NCGS §143-318.11(a)(3) to consult with attorney to preserve the attorney-client privilege. Upon voting, the **MOTION CARRIED UNANIMOUSLY**.

At 9:49 a.m., the board went into closed session. Director Zapple stepped out due to a request by Matthew Nichols, LCFWASA General Counsel. At 10:15a.m., the board returned to open session. Discussion only; no action taken.

**ADJOURNMENT**

There being no further business, Chairman Knight adjourned the meeting at 10:16 a.m.

Respectfully Submitted:

  
Scott Phillips, Secretary

# Lower Cape Fear Regional Source Water Protection Plan

LCFWASA Board Meeting- March 11, 2024

By: Glenn Walker and Krysden Burden

# What is source water protection?



The NC DEQ defines source water as “untreated water from streams, rivers, lakes, or groundwater aquifers that are sources of public drinking water.”<sup>1</sup>

*Surface water source- Cape Fear River*

*Groundwater sources- Castle Hayne and PeeDee aquifers*

Source water protection is the act of protecting drinking water sources from pollution and contamination.

Some ways of doing so include the North Carolina Surface Water Protection Program and Wellhead Protection Program.

1. <https://www.deq.nc.gov/about/divisions/water-resources/drinking-water/drinking-water-protection-program>



# History

**2014:** North Carolina HB 894, “An Act to Improve Source Water Protection Planning”

*Required public water suppliers to complete a source water protection plan*

**2018:** Federal America’s Water Infrastructure Act

*Required PWS suppliers to submit a source water risk and resiliency plan*

**2022:** Cape Fear Public Utility Authority (CFPUA) submits a *voluntary* surface (source water) protection plan to NCDEQ and forms a source water protection team

**2023:** NCDEQ approves CFPUA’s Source Water Protection Plan in the spring; Brunswick County partners with CFPUA in the fall and takes the lead on developing a regional plan which includes Pender County and LCFWASA



**FIGURE 4. LAND SURFACE  
SLOPE RATING**

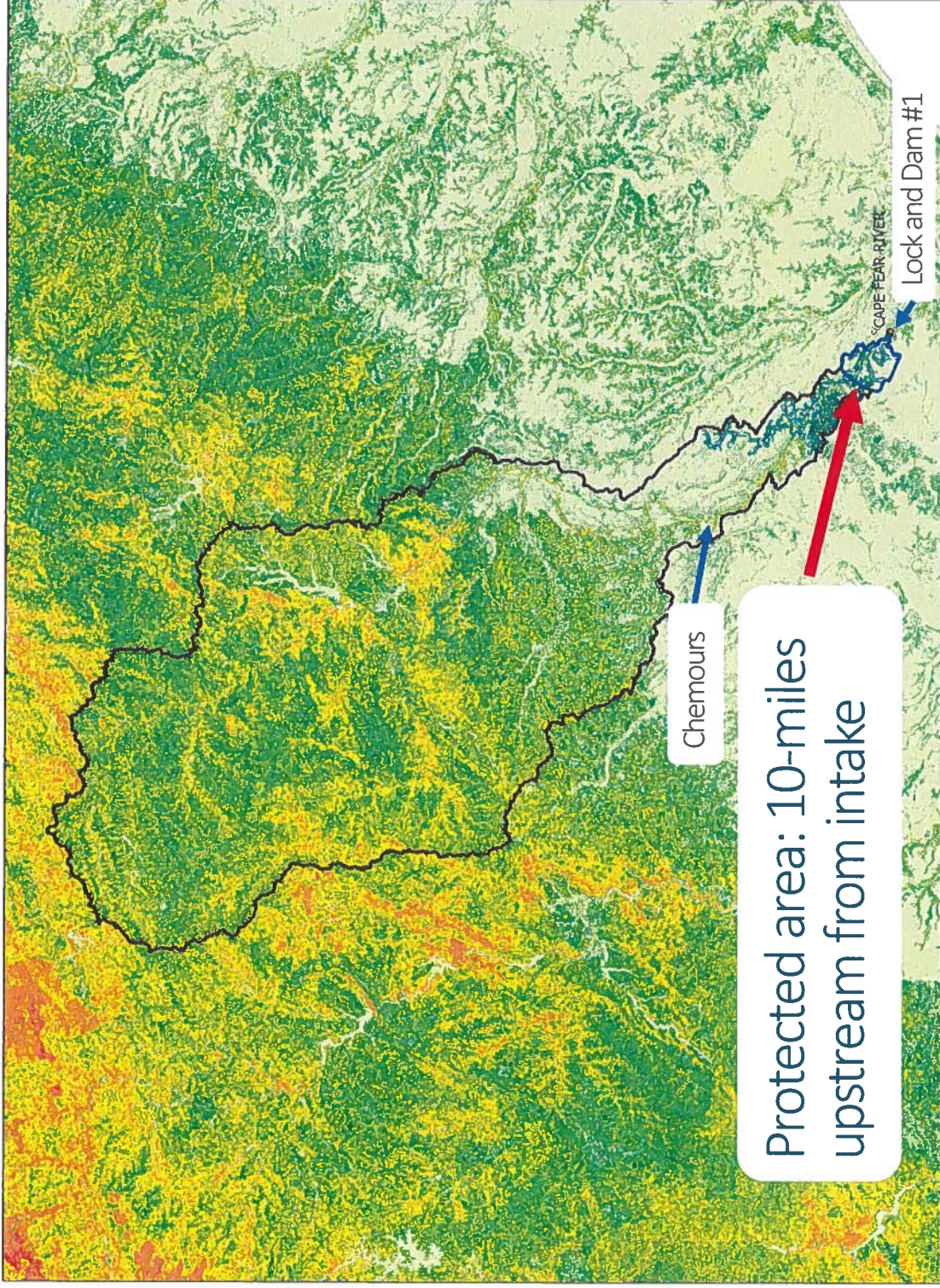
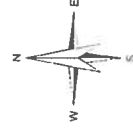
BRUNSWICK COUNTY WATER SYSTEM  
PWS ID: 0410045  
CAPE FEAR RIVER

**Assigned Ratings**

- 1 (<= 2 percent)
- 3 (> 2 to 5 percent)
- 5 (> 5 to 10 percent)
- 7 (> 10 to 20 percent)
- 9 (> 20 to 50 percent)
- 10 (> 50 percent)

**Watershed Zones**


- Critical Area Boundary
- Protected Area Boundary
- Stream Zone Boundary
- Watershed Boundary





# Brunswick County Goals

1. Facilitate source water protection team discussions on regulatory matters that affect the Cape Fear River Basin
2. Oversee algae monitoring program at the raw water intake (Kings Bluff Station)
3. Develop a robust upstream source water protection outreach program

 This is where we need your help

*Note:*

- For details on CFPUA's goals, please refer to their SWPP located in the "Document Center" at [www.cfpua.org](http://www.cfpua.org)
- Pender County and LCFWASA have the opportunity to develop their own goals and/or adopt CFPUA's and Brunswick County's goals

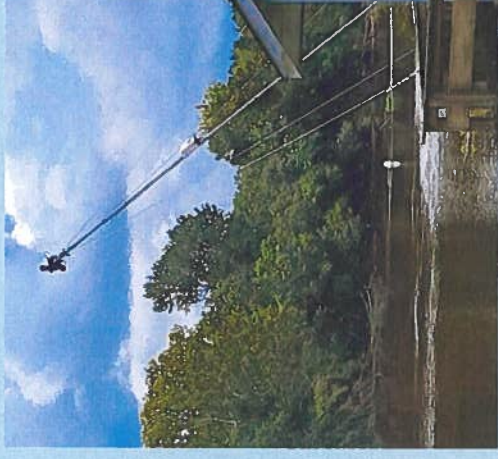


# Algae Monitoring

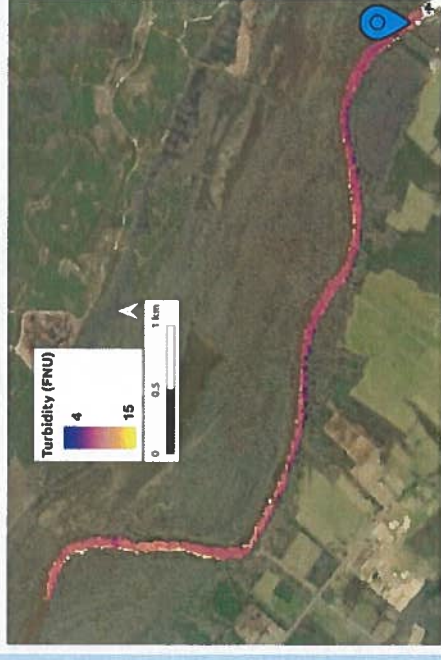
Algae monitoring across the CFR Basin has grown in scope and partners

Initially BCPU was monitoring at the LCFWASA intake above Lock & Dam #1 and sharing data with the intake partners: CFPUA, BCPU, Pender County, and DEQ

Currently USGS, DEQ, TNC, COE, and LCFWASA are all working together to collect and share data



**Gybe Product**





# Connections Upstream

Working on securing funding for educational messaging in the 10-mile protected area

Creating an informational handout that educates the community on source water protection

*See handout to the right*

Meeting with Bladen County Soil and Water on 3/12



Thoughts on additional contacts/connections?

**SOURCE WATER PROTECTION**

**WHAT IS SOURCE WATER?**  
Source water refers to the water that is collected (sourced) for drinking water treatment. Common examples include lakes, rivers, and groundwater.

**WHERE DOES OUR WATER COME FROM?**  
For many customers in the Southeast North Carolina region, drinking water is sourced from the Cape Fear River near Lock and Dam #1 in Bladen County.

**WHY DOES SOURCE WATER NEED PROTECTION?**  
The converging of the Haw and Deep Rivers form the Cape Fear. Our river journey starts above Greensboro. This means any discharge or spill upstream could significantly impact our drinking water downstream.

**WHAT IS BCPU DOING?**  
To safeguard the quality of water in Brunswick County, we continuously monitor the raw water intake and treat it to meet drinking water standards. BCPU also collaborates with other area groups as part of a source water protection team to work together to protect our source water through the treatment process.

**HOW CAN I HELP?**  
Every person can play an important role! Examples of ways to get involved include volunteering for a waterway cleanup, engaging with community partners, and properly disposing of hazardous household waste.

**FOR MORE INFORMATION ABOUT YOUR DRINKING WATER GO TO:**  
[WWW.BRADENCOUNTYH2O.COM](http://WWW.BRADENCOUNTYH2O.COM)

**FOR MORE INFORMATION ABOUT SOURCE WATER PROTECTION GO TO:**  
[WWW.EPA.GOV/SOURCEWATERPROTECTION](http://WWW.EPA.GOV/SOURCEWATERPROTECTION)



# Upstream Areas of Focus

With FEMA Floodplain Layer



Kings Bluff Station



Kings Bluff Station

Images taken from Bladen County GIS Web Viewer: <https://gis.bladenco.org/>



## LANDOWNER BENEFITS

# New sources of revenue for landowners

LandYield's offset projects provide access to the growing carbon market for timberland owners with less than 5,000 forested acres of ownership.

By deferring harvests, you allow your forest to store more carbon and generate carbon offsets while enhancing its recreational and environmental values.

# Land Preservation: A Potential (profitable?) Forestry Option

REVENUE

\*The price projection is representative of a fluctuating 3% inflationary growth and is not indicative of a guarantee of any future price or returns.



1-3

Harvest deferral & fixed prices

Landowner revenue over the first three years are set using a fixed offset price.

4-20

Harvest deferral & market-linked earnings

Beginning in the fourth year, your payments are directly tied to current carbon offset market prices. If carbon offset prices rise, your revenue will grow accordingly.

21-40

Limited harvests or continued market-linked offset earnings

In the second 20-year period, you are allowed to begin harvesting your enrolled lands (while maintaining Y20 carbon stocks). Depending on the registry rules then in effect, you may also have the opportunity to commit to a second harvest deferral to continue to receive additional offset revenue. In either case, you can still cut timber for your personal use and in other specific circumstances.

<https://landyield.com/>

# Potential Agencies to Partner With

North Carolina Land Trust Alliance

<https://landtrustalliance.org/land-trusts/gaining-ground/north-carolina>

The Nature Conservancy

<https://www.nature.org/en-us/about-us/where-we-work/united-states/north-carolina/>

Unique Places LLC

<https://www.landcan.org/local-resources/Unique-Places-LLC/37456/>

North Carolina Coastal Land Trust

<https://coastallandtrust.org/>



Thank you for your time today



Members of the Source Water Protection Team